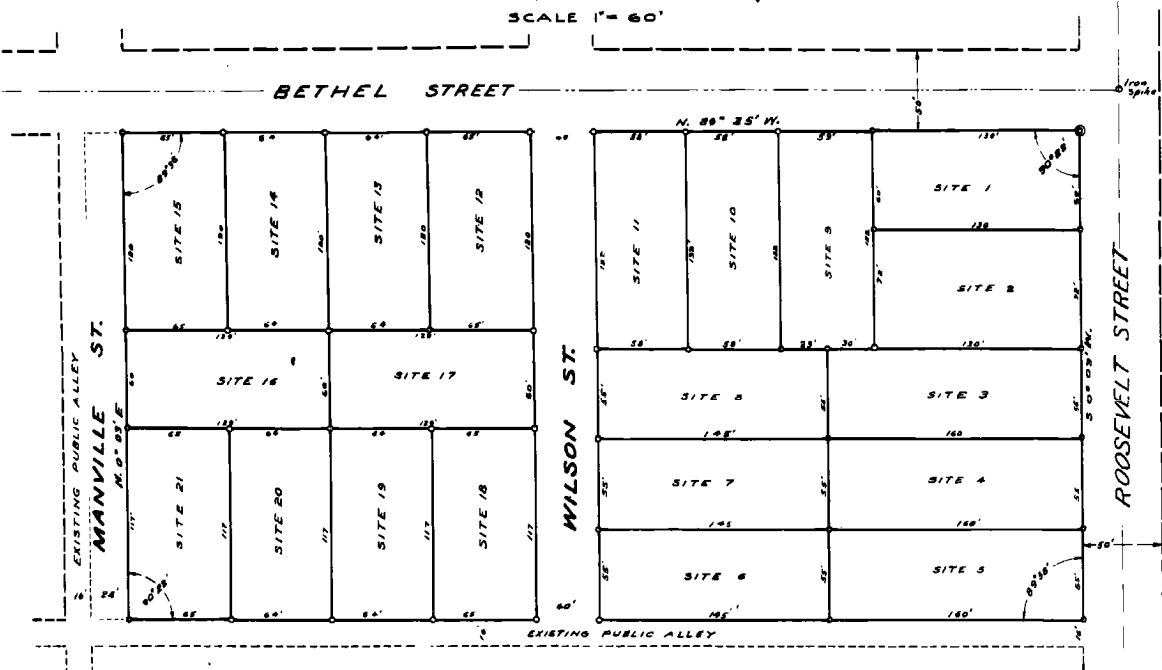


# AMENDED PLAT LOT 1, BLOCK 8, SCOTT'S (FIRST) SUBDIVISION

COUNTY of ADA STATE of IDAHO

SCALE 1" = 60'

1910/1911 platting alley between SITE 4 of AMENDED PLAT of LOT 1, Block 8 of SCOTT'S (FIRST) SUBDIVISION and SITE 3 of AMENDED PLAT of LOT 1, Block 8 of SCOTT'S (FIRST) SUBDIVISION.  
Instrument No. 483971, July 25, 1950  
Book 42, p. 24, Misc



### CERTIFICATE of CITY ENGINEER

I, James L. Morris, City Engineer, in and for the City of Boise, State of Idaho, do hereby certify that I have reviewed the plan shown hereon and find it to be in conformity with adjacent plottings and within the requirements of State law relating to areas adjoining corporate limits.

James L. Morris  
CITY ENGINEER.

### APPROVAL, BOISE CITY COUNCIL

I, Fred R. Bagley, City Clerk in and for the City of Boise do hereby certify that the plat shown hereon was accepted and approved at a regular meeting of the Council on May 29, 1950.

Fred R. Bagley  
CITY CLERK.

### CERTIFICATE of COUNTY SURVEYOR

I certify that I have reviewed the plan shown hereon and find the same technically consistent and in conformity with State laws relating to subdivisions.

Arden Smith  
SURVEYOR, ADA COUNTY

### APPROVAL BOARD of COUNTY COMMISSIONERS

I certify the plan shown hereon has been examined by the Board of Commissioners, Ada County, State of Idaho and duly approved.

Maurice E. Adkins  
CHAIRMAN of the BOARD.

### PROFESSIONAL ENGINEER'S CERTIFICATE

I certify that the measurements shown hereon were made by actual survey on the ground and all corners marked in accordance with existing legal requirements.

Leon M. Puck  
CIVIL ENGINEER  
Idaho License No. 339.

### OWNER'S CERTIFICATE

I certify that I am sole owner of Lot 1, Block 8 of Scott's (1st) Subdivision and I hereby approve and adopt the further subdivision of said Lot 1 into building sites as shown hereon. Furthermore, I hereby relinquish all rights and title to streets as shown and dedicate the same to public use forever.

Samuel A. Rule  
Beatrice R. Rule  
OWNER. Instrument No. 302640

### NOTARY'S CERTIFICATE

Before me personally appeared Samuel A. Rule and Beatrice A. Rule, his wife, known to me as the persons who executed the foregoing Certificate and they acknowledged the same to be their own voluntary act and deed, This 12th day of May 1950.

Charlotte Reddock  
NOTARY PUBLIC.

### COUNTY RECORDER'S CERTIFICATE

I certify this instrument was filed for record by Samuel A. Rule at 2:40 PM on the 6th day of June 1950 and duly recorded as Instrument No. 302640

Otto J. Peterson  
RECORDER for ADA COUNTY  
By Mabel J. Steele, Deputy  
Fees: \$5.00